

State of Wyoming Corner Record

(In compliance with the **CORNER PERPETUATION AND FILING ACT**, Wyoming Statutes, 1977 Section 36-11-101, et. seq., and the Rules and Regulations of the Board of Professional Engineers and Professional Land Surveyors)

Reverse side of this form may be used if more space is needed.

Record of original survey and citation of source of historical information (if corner is lost or obliterated). Description of corner monumentation evidence found and/or monument and accessories established to perpetuate the location of this corner. Sketch of relative location of monument, accessories, and reference points with course and distance to adjacent corner(s) (if determined in this survey). Method and rationale for reestablishment of lost or obliterated corner.

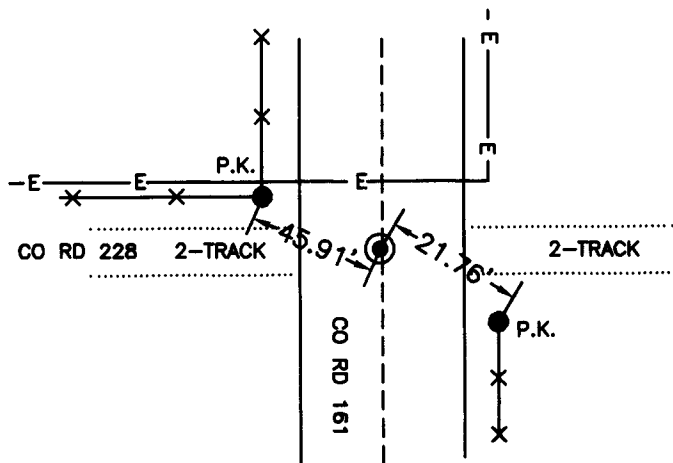
FOUND: 5/8" DIA. REBAR IN CENTERLINE INTERSESECTION OF CO RD 161 AND CO RD 228. ORIGIN UNKNOWN ACCEPTED POSITION.

GLO RECORD: SET A SANDSTONE 20"x18"x4" 15 INCHES DEEP MARKED 5 NOTCHES ON EAST SIDE AND 1 NOTCH ON SOUTH SIDE.

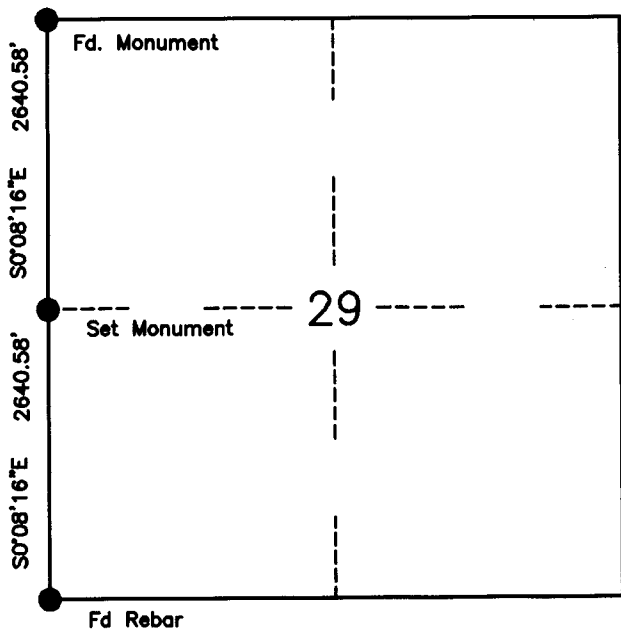
SET: NOTHING

REFERENCES: 2-PK NAILS SET IN TOP OF FENCEPOSTS.

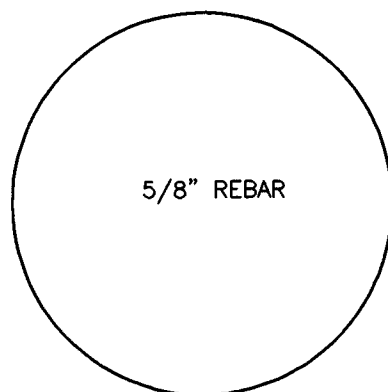
Reference Locations



Monument Location



Monument Inscription



Date of Field Work: 5/16/02

Office Reference: 0057

Cross Index Plat

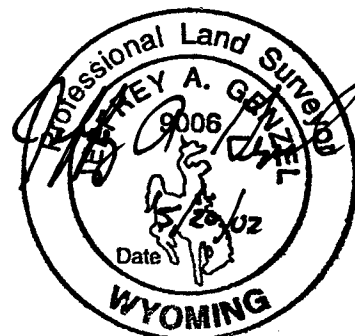
	1	2	3	4	5	6	7	8	9	10	11	12	13	14	15	16	17	18	19	20	21	22	23	24	25	
A																										A
B																										B
C		6	5	4	3	2	1																			C
D																										D
E																										E
F																										F
G			7	8	9	10	11	12																		G
H																										H
J																										J
K																										K
L			18	17	16	15	14	13																		L
M																										M
N																										N
O																										O
P			19	20	21	22	23	24																		P
Q																										Q
R																										R
S																										S
T			30	29	28	27	26	25																		T
U																										U
V																										V
W																										W
X			31	32	33	34	35	36																		X
Y																										Y
Z																										Z

Firm/Agency, Address

GENZEL LAND SURVEYING, P.C.
811 EAST 20TH STREET
CHEYENNE, WYOMING 82001
Ph: (307) 778-9553
Fax: (307) 635-1372

This corner record was prepared by me or under my direction and supervision.

SEAL & SIGNATURE



RECORDED 5/20/2002 AT 9:50 AM REC# 322351 BK# 1651 PG# 747
DEBRA K. LATHROP, CLERK OF LARAMIE COUNTY, WY PAGE 1 OF 1

Corner Name Section Corner Section 29, T 17 N, R 60 W, 6th P.M.
County: Laramie Wyoming

Cross-Index No.: V-5